



# HARBOUR DUES AND CHARGES 2024

---

## COMMERCIAL

---

**2. COMMERCIAL DUES**  
Effective from 1 January 2024

**2.1 MOORINGS (FISHING BOATS)<sup>1</sup>**

Area (Figure 1, Page 10)	Charge per annum	
	Per square foot	Per foot length
<b>ALBERT DOCK</b>		
Pontoon	<b>£8.68</b>	
<b>OTHER AREAS</b>		
Area 'A'		<b>£29.50</b>
Area 'B'		<b>£15.36</b>
Area 'C'		<b>£9.64</b>

**2.2 HARBOUR DUES AND FACILITIES**

	Charge per Gross Tonnage
Passenger vessels entering or leaving either harbour	<b>Nil</b>
Cargo Vessels entering or leaving either harbour: a) Not carrying hydrocarbon oils or gas in bulk b) Carrying hydrocarbon oils or gas in bulk	<b>a) Nil</b>  <b>b) Nil plus £7.76 per metric tonne or part thereof, of fuel discharged or loaded</b>
Self-discharging vessel entering or leaving either harbour	<b>Nil plus £2.62 per metric tonne of cargo discharged or loaded</b>
Cruise vessels entering either Harbour or the roadstead	<b>8.0 pence subject to maximum dues of £1,911.01</b>
ISPS Security Charge	<b>Nil plus £4.29 per passenger landed</b>
<u>All</u> vessels remaining in either harbour, roadstead or territorial waters performing an act of trade and not paying any other harbour dues	<b>£0.70 for each week or part of a week. Maximum £1,387.88</b>
	<b>Per 24 hours or part thereof</b>
Vessels 30m or longer LOA making use of commercial berths	<b>£10.00 per metre</b>

<sup>1</sup> Effective from 1 April 2024

**2. COMMERCIAL DUES**  
Effective from 1 January 2024

**2.3 PASSENGER DUES**

	RATE
<b>OUTSIDE OF BAILIWICK</b> Passengers embarked or disembarked from a vessel to or from a place outside the Bailiwick (excluding cruise passengers).	<b>£4.65 per adult</b> <b>£4.65 per child</b> <b>Nil per infant</b>
<b>INTER BAILIWICK</b> Passengers embarked on a vessel for another Island in the Bailiwick.	<b>£1.31 per adult</b> <b>£0.66 per child</b> <b>Nil per infant</b>
<i><b>Adult</b> – means a passenger of 16 years of age and over</i> <i><b>Child</b> – means a passenger of between 5 and 15 years of age</i> <i><b>Infant</b> – means a passenger under 5 years of age</i>	

**2.4 FREIGHT**

Harbour dues for loading/discharging vessels.

**Transit charged at 50% of below rates**

	Charge
All goods other than vehicles, hydrocarbon oils or gas in bulk	<b>£13.64 per metric tonne or part thereof</b>
Accompanied Private Vehicles	<b>£20.08 per vehicle</b>
Accompanied Commercial Vehicles	<b>£28.42 per vehicle</b>
Unaccompanied Vehicles (Private or Commercial)	<b>£28.42 per vehicle</b>
Imported Vehicles	<b>£31.14 per vehicle</b>
Caravans and trailers over 3 metres	<b>£15.03 per vehicle/trailer</b>
Other including motorcycles and trailers under 3 metres	<b>£ 5.00 per vehicle/trailer</b>

*Calculation of Charge*

*Goods carried in or on a vehicle, other than the personal effects or baggage of the driver thereof or a passenger therein or thereon, shall be charged in addition to the charges in respect of the vehicle;*

*A trade or commercial trailer, whether accompanied by a prime mover or any other towing vehicle, shall be charged separately as a commercial vehicle;*

*An articulated vehicle shall be charged as one vehicle;*

**2. COMMERCIAL DUES**  
Effective from 1 January 2024

**2.5 CRANE DUES**

Where the charges in 2.4 are not applicable, the following half hourly rates will apply:

		<b>Rate per <u>half hour</u> or part thereof</b>
<b>(a)</b>	Portal cranes	<b>£51.41</b>
<b>(b)</b>	Dockside Mobile/ RO-RO ramp	<b>£78.07</b>
<b>(c)</b>	Other bulk cargo un/loaded by grab	<b>£206.24</b>
<i>A minimum period of <b>half an hour</b> shall be charged.</i>		
		<b>Rate per <u>hour</u> or part thereof</b>
<b>d)</b>	Road Mobile Crane	<b>£70.85 plus rate for driver</b>
<i>A minimum period of <b>one hour</b> shall be charged within working hours 0800-1700 Monday to Friday. Where the service is provided outside of these times, charges at the appropriate labour rate will apply as advised to the Commercial Port Users Group, subject to a minimum 3 hours.</i>		

**2.6 QUAY SPACE CHARGES**

		<b>RATE per day</b>	<b>RATE per day (more than 2 days)</b>
<b>LO/LO and RO/RO</b>			
<b>(a)</b>	<10m flats, containers, equipment, commercial or private vehicles	<b>£36.25</b>	<b>£108.78</b>
<b>(b)</b>	>10m flats, containers or equipment	<b>£72.71</b>	<b>£218.08</b>
<b>MISCELLANEOUS</b>			
Loose goods, bulk cargo, items not included above		<b>£2.15 per square metre</b>	<b>£6.43 per square metre</b>
<i>Items to be allowed to remain without charge for the first 24 hours. Items remaining for longer than 6 days will attract a charge at double the above rate.</i>			

**2.7 CRANE HANDLING FEE FOR FREIGHT TRANSITS**

		<b>Rate per re-stow</b>
Crane dues for transiting freight		<b>£15.40</b>

**2.8 IMPORTANT ADDITIONAL INFORMATION**

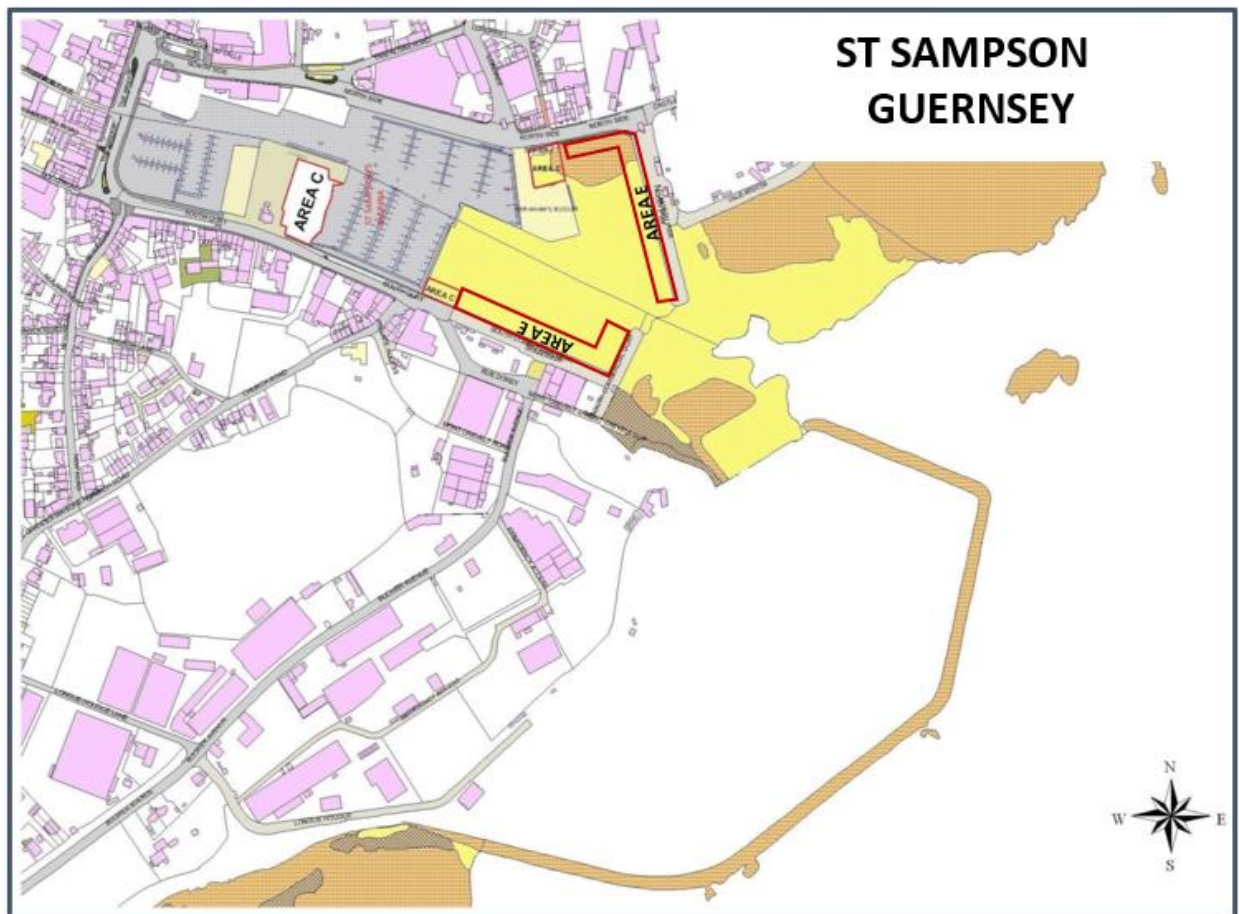
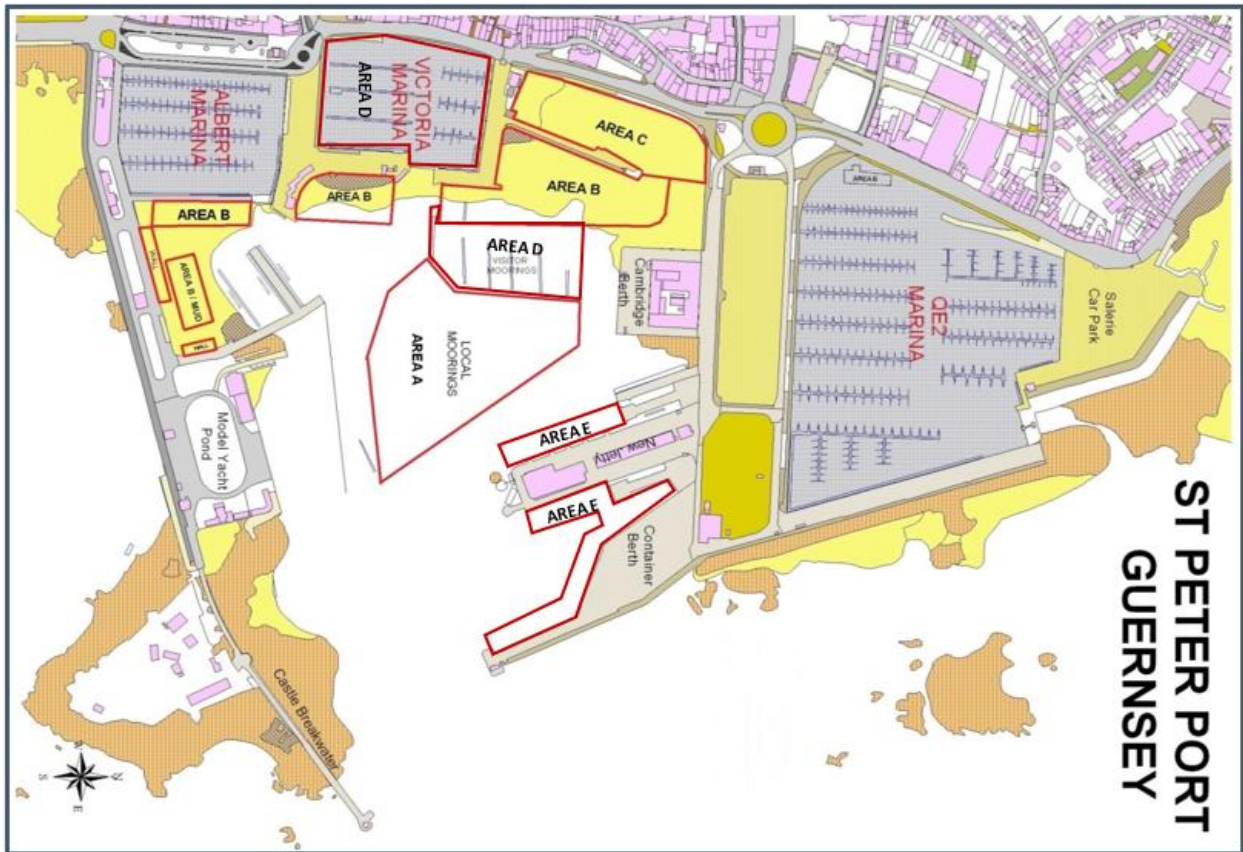
<b>Ports - Normal Working Day</b>	
<i>Monday to Friday</i>	<i>Saturday, Sunday or Public Holiday</i>
<i>0600-2200</i>	<i>0800-1700</i>
<i>Where services are provided outside the normal working day for the ports, labour costs will be charged at the appropriate rate as advised to the Commercial Port Users Group, subject to a minimum 3 hours.</i>	

**3. PILOTAGE DUES**  
**Effective from 1 January 2024**

**3.1 Acts of Pilotage**

	<b>RATE</b>
a) Pilotage of a vessel for the purpose of entering or leaving or making use of the ports of St Peter Port or St Sampsons or the roadsteads	<b>32.27 pence per GT</b> (see section (c))
b) Minimum dues for an act of pilotage (see section (a))	<b>£257.02</b>
c) Maximum dues for an act of pilotage	<b>Up to 2,000GT</b> (see section (a))
d) Pilotage of vessel from berth to berth within a port	<b>£129.79</b>
e) <b>Additional</b> charges if sailing of vessel delayed (i) If vessel sails within one hour of notified time of sailing. (ii) If vessel sails later than one hour after notified time of sailing.	<b>Nil</b>  <b>£129.79 per hour</b> or part thereof.
f) <b>Additional</b> charges if sailing of vessel postponed until the next tide with less than one hour's notice.	<b>50% of fee that was due, plus rate (i).</b>
g) Vessel cancelling an act of pilotage: (i) After Pilots already at sea. (ii) Less than one hour before advised ETA, and if Pilots not already at sea.	<b>100% of (a)</b> <b>50% of (a)</b>
h) Fee charged if a general pilot is over-carried for any reason resulting in disembarkation at another port.	<b>£324.52</b> per 24 hours or part thereof.  <b>Plus</b> travel expenses charged at cost.
i) Crewing Charge - Charge applicable for each use of Pilot boat	<b>£34.15</b> per act (Cargo) <b>£47.79</b> per act (Pax)
j) Dues to be paid in respect of acts of pilotage performed by a special pilot.	<b>12%</b> of the dues that would have been payable if the act of Pilotage had been performed by a general pilot (a)

Figure 1 - Mooring Areas



## Guernsey Ports - Terms of Credit

1. Invoices will be raised for each transaction of business between a customer and Guernsey Ports and must be settled within 30 days of the date of the invoice. The invoice must be paid in full and any incorrect charge or other error must be notified to Guernsey Ports.
2. Guernsey Ports does not permit any right of offset against any other account without prior written agreement.
3. Where discrepancies are verified, a new invoice or credit note will be issued as appropriate.
4. Settlement of invoices may be made by:
  - BACS transfer to “National Westminster Bank”, Sort Code: 60-09-20, Account Number: 74121677. IBAN GB46NWBK60092074121677. BIC Code: RBOS GG SX. Make sure you quote your reference number and your customer number where possible.
  - By Phone
    - Payment by credit and debit card can be made by contacting the Corporate Customer Services Team on 01481 220015.
  - By Post
    - You can pay by post by sending your cheque to: Corporate Customer Services Team, Shared Transaction Service Centre, Edward T Wheadon House, Le Truchot, St Peter Port, GY1 1WH – please do not post cash.
  - In Person
    - Payments by cash, cheque and card can be made in person on Level 2 at Edward T Wheadon House, Le Truchot, St Peter Port.
  - To pay by Direct Debit please contact the Guernsey Ports’ Finance Team on 01481 220641.
5. Any invoice not paid in full by the due date will be subject to an interest charge of 2.5% per month on the outstanding balance.
6. If accounts are not fully paid within the prescribed period, Guernsey Ports reserves the right to seek recovery of the outstanding amount, which may result in legal proceedings being commenced. The costs of such proceedings will be recovered in line with States of Guernsey policy.
7. Guernsey Ports reserves the right to alter, suspend, cancel or otherwise vary these conditions at any time.
8. Guernsey Ports reserves the right to suspend delivery of goods or services in the event of non-payment of correctly due monies.

*This booklet is for information only. Guernsey Ports reserves the right to revise charges and contracts as and when necessary.*



*Guernsey Ports  
PO Box 631  
St Julian's Emplacement  
St Peter Port  
Guernsey  
GY1 3DL*

*Tel: +44 (0) 1481 220229*

*Email: [guernsey.harbour@gov.gg](mailto:guernsey.harbour@gov.gg)*

*[www.harbours.gg](http://www.harbours.gg)*